



*Strength, Dignity, Quality of Life*

**MISSOURI HOUSING**

DEVELOPMENT COMMISSION

# ESG-CV Update Q&A Part 1

---

AIDAN RICH - ESG-CV GRANT SPECIALIST

DENISE HOSS – COMPLIANCE OFFICER

JENNI MILLER – HUD PROGRAMS MANAGER

# Agenda

---

Part I: Expected Timeline

Part II: Updates to ESG-CV Program

Part III: Important Topics

Part IV: Open Q&A

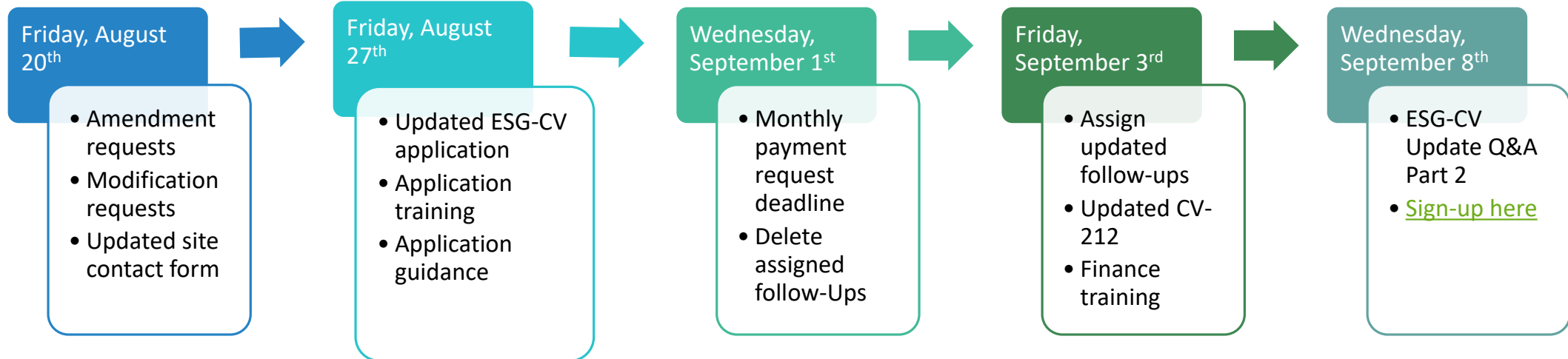
# Part I

---

## EXPECTED TIMELINE

# Expected Timeline

---



# Part II

---

## UPDATES TO ESG-CV PROGRAM

# Vaccinating the Homeless Population

---

United States and Missouri experiencing low vaccination rates

Trends in the homeless population\*

- Lower vaccine confidence
- Higher-risk of hospitalization/death

Vaccines are still effective at reducing the spread of the Delta variant

HUD has included Vaccine Incentives in ESG-CV

- \$50 cash for each coronavirus vaccine dose administered (up to 2 doses)

Vaccine and Testing Transportation

CV-218 Vaccine Incentives form

Disease Mitigation Budget Modifications

# Disease Mitigation Budget Modification

---

## Prerequisites

- Must request and be approved for reimbursement of 50 percent of current award

## Eligible Activities

- Vaccine Incentives
- Vaccine and Testing Transportation
- Disease Mitigation Training
- Hygiene Services under Street Outreach
- Personal Protective Equipment (PPE)
- Hazard Pay
- Volunteer Incentives
- Administration and HMIS

# Exceptional Need Budget Modification

---

## Prerequisites

- Must expect to request reimbursement for more than current award within the month

## Requirements

- Must submit CV-217 Spending Plan form with request
- Must request and be approved for reimbursement, in amount greater than previous award, in the first month
- Must request and be approved for reimbursement on monthly basis for following three months



# Changes to Eligible Expenses

---

## Eligible

- Laundry Services
- Centralized or Coordinated Assessment
- Cellphones and Internet
- Essential Services from Shelter are Eligible
- Furniture and Household Furnishings
- Renters Insurance
- Subleases
- Sponsor-Based Rental Assistance

## Ineligible

- Major Rehab
- Renovation
- Conversion
- Acquisition
- Fuel for Street-Legal Vehicles

# Not Reimbursable Yet

---

Can begin incurring, but cannot request reimbursement for until September

- Vaccine Incentives
- Vaccine and Testing Transportation
- Centralized or Coordinated Assessment

# Additional Changes

---

Removal of early Emergency Shelter deadlines

Housing Quality Standards (HQS)

No CoC meeting attendance requirement

Removal of funding caps for agencies

Quicker turn-around on applications, amendments, and modifications

# Part III

---

## IMPORTANT TOPICS

# 50% Spending Deadline

## Friday, October 1<sup>st</sup>

---

### Failure to meet

- CV-217 Spending Plan
  - Request monthly
- Ineligible for future modifications
- Increase chance of unscheduled compliance visit
- Recapture

### Exempt

- New applicants
- Disease Mitigation Budget modification funds

# Homelessness Prevention

---

More funding and less restrictions with SAFHR

## Using ESG-CV funds

### Priority

- Case management
- Newly eligible essential services

### Not the Priority

- Rental assistance
- Financial assistance

# Area Median Income (AMI)

---

Make sure to select the current year

2021 2020 2019 2018 2017 Year ▼

Select Individual Income Limits Areas

**Access Individual Income Limits Areas**

This system provides complete documentation of the development of the FY 2021 Income Limits (ILs) for any area of the country selected by the user. Official ILs, available in pdf and excel formats at this [link](#), may differ slightly from those calculated in the documentation system, and should be used for ALL official purposes.

[Click Here for FY 2021 IL Documentation](#)

# Area Median Income (AMI)

---

Select Missouri and your County,

**First select a state:**

- Kansas - KS
- Kentucky - KY
- Louisiana - LA
- Maine - ME
- Maryland - MD
- Massachusetts - MA
- Michigan - MI
- Minnesota - MN
- Mississippi - MS
- Missouri - MO

**Then select a county:**

- Henry County, MO
- Hickory County, MO
- Holt County, MO
- Howard County, MO
- Howell County, MO
- Iron County, MO
- Jackson County, MO
- Jasper County, MO
- Jefferson County, MO
- Johnson County, MO

[View County Calculations](#)

---

**Or** view FY 2021 statewide Income Limits for Missouri:

~~[View State Calculations](#)~~



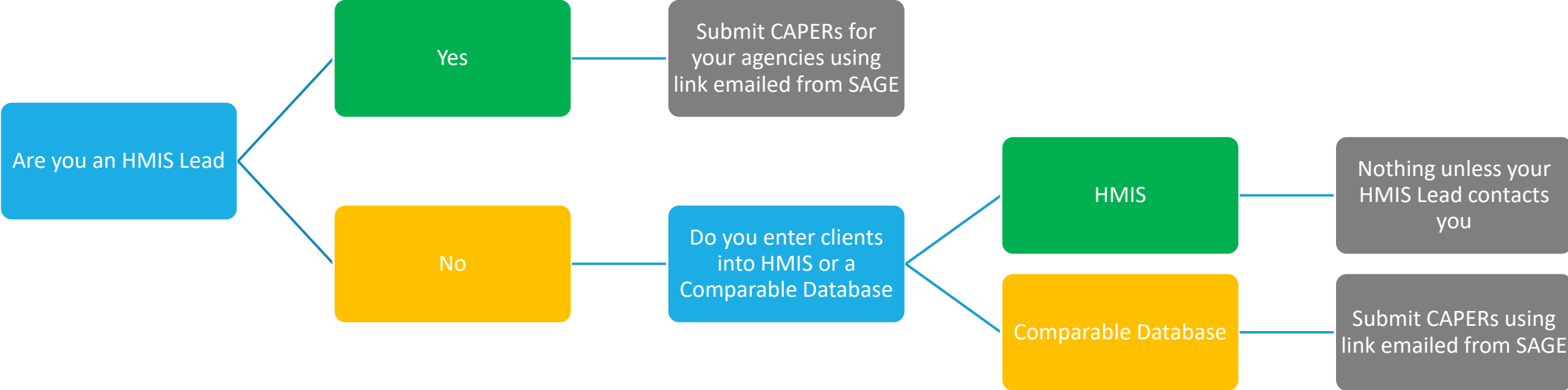
# Area Median Income (AMI)

Find the Household size using the Very Low (50%) Income Limits

FY 2021 Income Limit Area	Median Family Income <a href="#">Click for More Detail</a>	FY 2021 Income Limit Category	Persons in Family							
			1	2	3	4	5	6	7	8
<b>Kansas City, MO-KS HUD Metro FMR Area</b>	\$86,600	Very Low (50%) Income Limits (\$) <a href="#">Click for More Detail</a>	30,350	34,650	39,000	<b>43,300</b>	46,800	50,250	53,700	57,200
		Extremely Low Income Limits (\$)* <a href="#">Click for More Detail</a>	18,200	20,800	23,400	<b>26,500</b>	31,040	35,580	40,120	44,660
		Low (80%) Income Limits (\$) <a href="#">Click for More Detail</a>	48,550	55,450	62,400	<b>69,300</b>	74,850	80,400	85,950	91,500

# CAPER

---



# Using the CV-218 Vaccine Incentives Form

---

## 6 Pages

1. Basic Info and Vaccine Dose 1
2. Vaccine Dose 2
3. Vaccine and Testing Transportation
4. Homelessness Verification
5. Staff and non-DV client signature
6. DV-client signature

## Always Complete

- Top part of Page 1

## If the client is receiving Vaccine Incentives

- Complete rest of Page 1 for one dose
- Complete rest of Page 1 and Page 2 for two doses

## If the client is receiving Vaccine and Testing Transportation

- Complete Page 3

# Using the CV-218 Vaccine Incentives Form

---

If the Client has not filled out CV-104 and **IS NOT** planning to receive other services

- Complete Page 4
- Staff signs Page 5

If the Client has not filled out CV-104 and **IS** planning to receive other services

- Complete CV-104

If the client has not filled out CI-108 and **IS NOT** planning to receive other services

- Non-DV client signs Page 5
- DV client signs Page 6

If the Client has not filled out CI-108 and **IS** planning to receive other services

- Non-DV client fills out CI-108
- DV client fills out CI-108-DV

# Financial Documentation

---

## 1. Proof of Need

- If a service or utility bill; it must list physical address of service (DV shelters can be exempt)
- Receipts must list eligible item(s) purchased, services performed, amount(s), and date(s)
- Assemble receipts, bills in order (preferably by payment date with corresponding invoice)

## 2. Proof of Cleared Payment

- Copy of cleared payment or bank statement clearly showing check number, date, and amount
- Payroll debits on bank statements must match payroll report total of net amount or copy of paystub
  - Timesheets
  - Last 4 digits of employees' SSN
- Employee benefits (insurance, taxes, work comp., etc.)

# Part IV

---

OPEN Q&A



*Strength, Dignity, Quality of Life*

**MISSOURI HOUSING**

DEVELOPMENT COMMISSION

# ESG-CV Update Q&A Part 1

---

AIDAN RICH - ESG-CV GRANT SPECIALIST

DENISE HOSS – COMPLIANCE OFFICER

JENNI MILLER – HUD PROGRAMS MANAGER